

**NSE Antibody**  
**Rabbit mAb**  
**Catalog # AP90659****Specification**

---

**NSE Antibody - Product Information**

Application	WB, IHC, FC, ICC
Primary Accession	<a href="#">P09104</a>
Reactivity	Rat
Clonality	Monoclonal

**Other Names**

ENO2; ENOG; Enolase 2; enolase 2 (gamma, neuronal); Gamma-enolase; Neural enolase; neuron specific gamma enolase; Neuron-specific enolase; neurone-specific enolase; NSE;

Isotype	Rabbit IgG
Host	Rabbit
Calculated MW	47269 Da

**NSE Antibody - Additional Information**

Dilution	WB~~1:1000 IHC~~1:100~500 FC~~1:10~50 ICC~~N/A
Purification	Affinity-chromatography
Immunogen	A synthesized peptide derived from human NSE
Description	ENO2 an enzyme with 2-phospho-D-glycerate hydro-lyase activity. One of the three enolase isoenzymes found in mammals. This isoenzyme, a homodimer, is found in mature neurons and cells of neuronal origin. A switch from alpha enolase to gamma enolase occurs in neural tissue during development in rats and primates. Rabbit IgG in phosphate buffered saline , pH 7.4, 150mM NaCl, 0.02% sodium azide and 50% glycerol. Store at +4°C short term. Store at -20°C long term. Avoid freeze / thaw cycle.
Storage Condition and Buffer	

**NSE Antibody - Protein Information**

**Name** ENO2 ([HGNC:3353](#))

**Function**

Enolase that catalyzes the conversion of 2-phosphoglycerate to phosphoenolpyruvate in glycolysis and the reverse reaction in gluconeogenesis (By similarity). Has neurotrophic and neuroprotective

properties on a broad spectrum of central nervous system (CNS) neurons. Binds, in a calcium-dependent manner, to cultured neocortical neurons and promotes cell survival (By similarity).

#### **Cellular Location**

Cytoplasm. Cell membrane. Note=Can translocate to the plasma membrane in either the homodimeric (alpha/alpha) or heterodimeric (alpha/gamma) form

#### **Tissue Location**

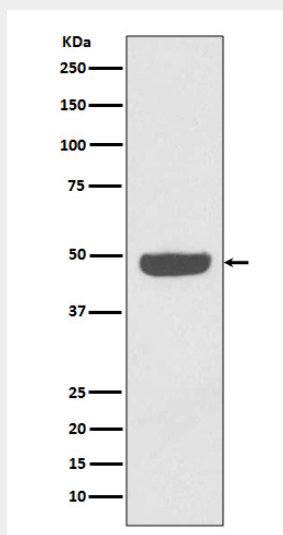
The alpha/alpha homodimer is expressed in embryo and in most adult tissues. The alpha/beta heterodimer and the beta/beta homodimer are found in striated muscle, and the alpha/gamma heterodimer and the gamma/gamma homodimer in neurons

### **NSE Antibody - Protocols**

Provided below are standard protocols that you may find useful for product applications.

- [Western Blot](#)
- [Blocking Peptides](#)
- [Dot Blot](#)
- [Immunohistochemistry](#)
- [Immunofluorescence](#)
- [Immunoprecipitation](#)
- [Flow Cytometry](#)
- [Cell Culture](#)

### **NSE Antibody - Images**



Western blot analysis of NSE expression in HeLa cell lysate.